

HELVIC

High quality chains
**DRIVE AND AGRICULTURAL
CHAINS**

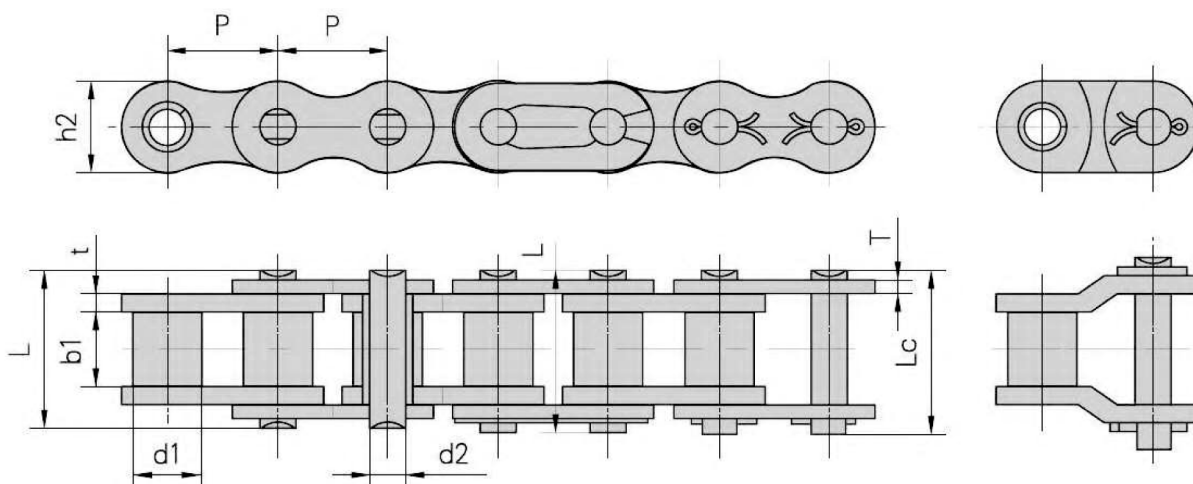


INDEX

■ Simplex European Standard roller chain (B series).....	2
■ Duplex European Standard roller chain (B series).....	3
■ Triplex European Standard roller chain (B series).....	4
■ Simplex American Standard roller chain (A series).....	5
■ Duplex American Standard roller chain (A series).....	6
■ Triplex American Standard roller chain (A series).....	7
■ Heavy duty roller chain (A series).....	8
■ Heavy duty roller chain (B series).....	9
■ O-ring chain.....	10
■ High strength roller chain (HT series).....	11
■ High strength roller chain (SP series).....	12
■ Agricultural roller chain (S series).....	13-14
■ Agricultural roller chain (CA and A series).....	15-16
■ Agricultural roller chain (K series).....	17
■ Agricultural roller chain (SD series).....	18
■ Agricultural roller chain (S series (S52F355VSE; 55VSEL).....	19
■ Agricultural roller chain (C series (F1, K19, K39, K27S, F13-F17).....	20-22
■ Agricultural roller chain (maize chain).....	23-25

B Series Simplex European Standard Roller Chain

■ corresponding to ISO 606, DIN8187

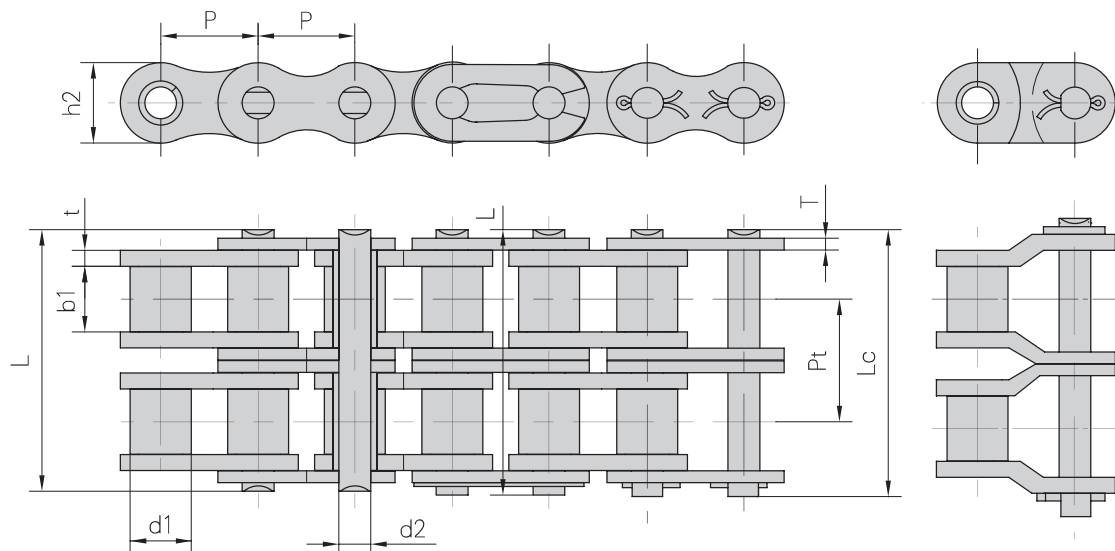


ISO ref. chain no.	Pitch	Roller diameter	Width between inner plate	Pin diameter	Pin length		Inner plate depth	Plate thickness	Ultimate tensile strength	Average tensile strength	Weight per meter
	P	d1 max	b1 min	d2 max	L max	Lc max	h2 max	t/T max	Q min	Q0	q
	mm	mm	mm	mm	mm	mm	mm	mm	kN/LB	kN	kg/m
03B-1	5	3.2	2.5	1.49	6.8	7.8	4.1	0.8	2.2/500	2.4	0.08
04B-1	6	4	2.8	1.85	6.8	7.8	5	0.6	3/682	3.2	0.11
05B-1	8	5	3	2.31	8.2	8.9	7.1	0.8	5/1136	5.9	0.2
*06B-1	9.525	6.35	5.72	3.28	13.15	14.1	8.2	1.3	9/2045	10.4	0.41
08B-1	12.7	8.51	7.75	4.45	16.7	18.2	11.8	1.6	18/4091	19.4	0.69
10B-1	15.875	10.16	9.65	5.08	19.5	20.9	14.7	1.7	22.4/5091	27.5	0.93
12B-1	19.05	12.07	11.68	5.72	22.5	24.2	16	1.85	29/6591	32.2	1.15
16B-1	25.4	15.88	17.02	8.28	36.1	37.4	21	4.15/3.1	60/13636	72.8	2.71
20B-1	31.75	19.05	19.56	10.19	41.3	45	26.4	4.5/3.5	95/21591	106.7	3.7
24B-1	38.1	25.4	25.4	14.63	53.4	57.8	33.2	6/4.8	160/36364	178	7.1
28B-1	44.45	27.94	30.99	15.90	65.1	69.5	36.7	7.5/6	200/45455	222	8.5
32B-1	50.8	29.21	30.99	17.81	66	71	42	7/6	250/56818	277.5	10.25
40B-1	63.5	39.37	38.1	22.89	82.2	89.2	52.96	8.5/8	355/80682	394	16.35
48B-1	76.2	48.26	45.72	29.24	99.1	107	63.8	12/10	560/127272	621.6	25
56B-1	88.9	53.98	53.34	34.32	114.6	123	77.8	13.5/12	850/193180	940	35.78
64B-1	101.6	63.50	60.96	39.40	130	138.5	90.17	15/13	112/254544	1240	46
72B-1	114.3	72.39	68.58	44.48	147.4	156.4	103.6	17/15	1400/318180	1550	60.8

*straight side plates

B Series Duplex European Standard Roller Chain

■ corresponding to ISO 606, DIN8187

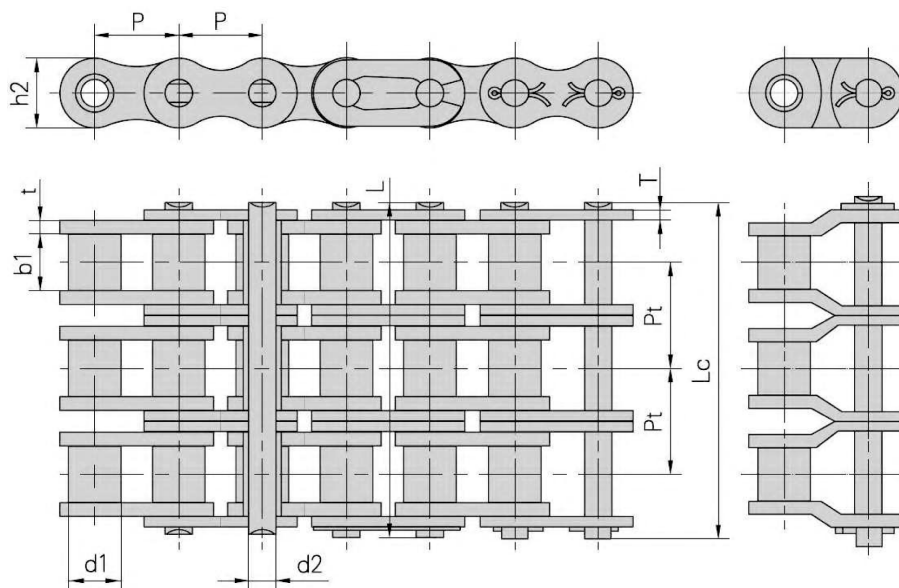


ISO ref. chain no.	Pitch	Roller diameter	Width between inner plate	Pin diameter	Pin length		Inner plate depth	Plate thickness	Transverse pitch	Ultimate tensile strength	Average tensile strength	Weight per meter
	P	d1 max	b1 min	d2 max	L max	L max	h2 max	t/T	Pt	Q min	Q0	q
	mm	mm	mm	mm	mm	mm	mm	mm	mm	kN/LB	kN	kg/m
04B-2	6	4	2.8	1.85	10.5	12.8	5	0.6	5.5	5.5/1250	7.1	0.23
05B-2	8	5	3	2.31	13.9	14.5	7.1	0.8	5.64	7.8/1773	10.2	0.33
*06B-2	9.525	6.35	5.72	3.28	23.4	24.4	8.2	1.3	10.24	16.9/3841	18.7	0.77
08B-2	12.7	8.51	7.75	4.45	31.2	32.2	11.8	1.6	13.92	44.5/10114	38.7	1.34
10B-2	15.875	10.16	9.65	5.08	36.1	37.5	14.7	1.7	16.59	57.8/13136	56.2	1.84
12B-2	19.05	12.07	11.68	5.72	42	43.6	16	1.85	19.46	106/24091	66.1	2.31
16B-2	25.4	15.88	17.02	8.28	68	69.3	21	4.15/3.1	31.88	170/38636	133	5.42
20B-2	31.75	19.05	19.56	10.19	77.7	81.5	26.4	4.5/3.5	36.45	280/38636	211.2	7.2
24B-2	38.1	25.4	25.40	14.63	101.7	106.2	33.2	6/4.8	48.36	360/81818	319.2	13.4
28B-2	44.45	27.94	30.99	15.9	124.6	129.1	36.7	7.5/6	59.56	450/102273	406.8	16.6
32B-2	50.8	29.21	30.99	17.81	124.6	129.6	42	7/6	58.55	630/134182	508.5	21
40B-2	63.5	39.37	38.1	22.89	154.6	161.5	52.96	8.5/8	72.29	1000/227272	711.9	32
48B-2	76.2	48.26	45.72	29.24	190.4	198.2	63.8	12/10	91.21	1600/363635	1130	50
56B-2	88.9	53.98	53.34	34.32	221.2	229.6	77.8	13.5/12	106.6	2000/454544	1760	71.48
64B-2	101.6	63.5	60.96	39.4	249.9	258.4	90.17	15/13	119.98	2500/568180	2200	91
72B-2	114.3	72.39	68.58	44.48	283.7	292.7	103.6	17/15	136.27	32/7273	2750	120.4

*straight side plates

B Series Triplex European Standard Roller Chain

■ corresponding to ISO 606, DIN8187

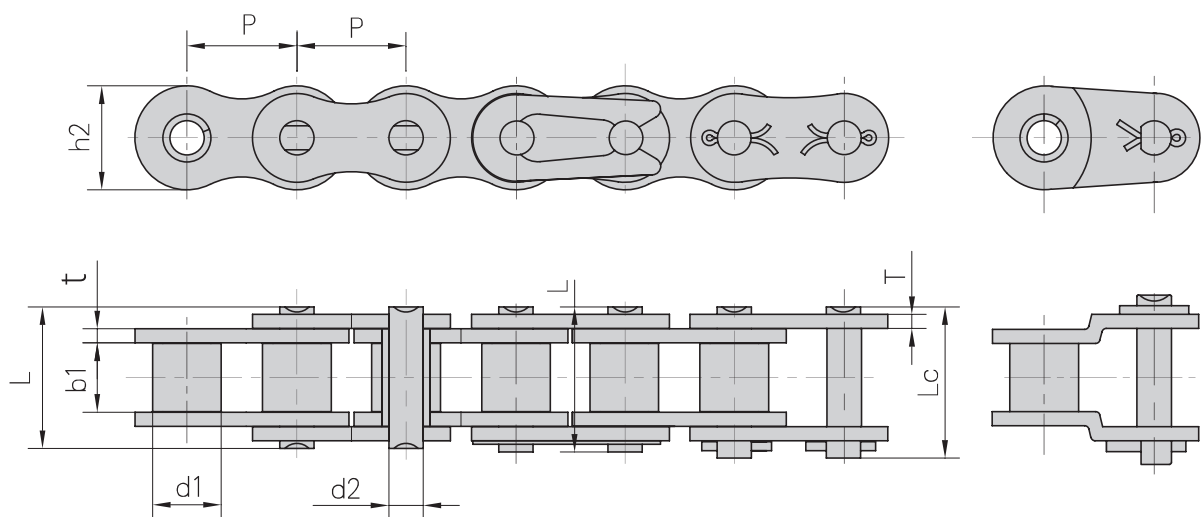


ISO ref. chain no.	Pitch	Roller diameter	Width between inner plate	Pin diameter	Pin length		Inner plate depth	Plate thickness	Transverse pitch	Ultimate tensile strength	Average tensile strength	Weight per meter
	P	d1 max	b1 min	d2 max	L max	L max	h2 max	t/T	Pt	Q min	Q0	q
	mm	mm	mm	mm	mm	mm	mm	mm	mm	kN/LB	kN	kg/m
05B-3	8	5	3	2.31	19.5	20.2	7.1	0.8	5.64	11.1/2523	13.8	0.48
*06B-3	9.525	6.35	5.72	3.28	33.5	34.6	8.2	1.3	10.24	24.9/5659	30.1	1.16
08B-3	12.7	8.51	7.75	4.45	45.1	46.1	11.8	1.6	13.92	47.5/10795	57.8	2.03
10B-3	15.875	10.16	9.65	5.08	52.7	54.1	14.7	1.7	16.59	66.7/15159	84.5	2.77
12B-3	19.05	12.07	11.68	5.72	61.5	63.1	16	1.85	19.46	86.7/19705	101.8	3.46
16B-3	25.4	15.88	17.02	8.28	99.8	101.2	21	4.15/3.1	31.88	160/36364	203.7	8.13
20B-3	31.75	19.05	19.56	10.19	114.2	117.9	26.4	4.5/3.5	36.45	250/56818	290	10.82
24B-3	38.1	25.4	25.40	14.63	150.1	154.6	33.2	6/4.8	48.36	425/96591	493	10.1
28B-3	44.45	27.94	30.99	15.9	184.2	188.7	36.7	7.5/6	59.56	530/120454	609.5	24.92
32B-3	50.8	29.21	30.99	17.81	183.2	188.2	42	7/6	58.55	670/152273	770.5	31.56
40B-3	63.5	39.37	38.1	22.89	226.8	233.8	52.96	8.5/8	72.29	950/215909	1092.5	48.1
48B-3	76.2	48.26	45.72	29.24	281.6	289.4	63.8	12/10	91.21	1500/340909	1710	75
56B-3	88.9	53.98	53.34	34.32	372.8	336.2	77.8	13.5/12	106.6	2240/545450	2464	107/18
64B-3	101.6	63.5	60.96	39.4	369.8	378.3	90.17	15/13	119.98	3000/681820	3300	136
72B-3	114.3	72.39	68.58	44.48	420	429	105.6	17/15	136.27	3750/852270	4125	180

A Series

Simplex American Standard Roller Chain

■ corresponding to ISO 606, DIN8188

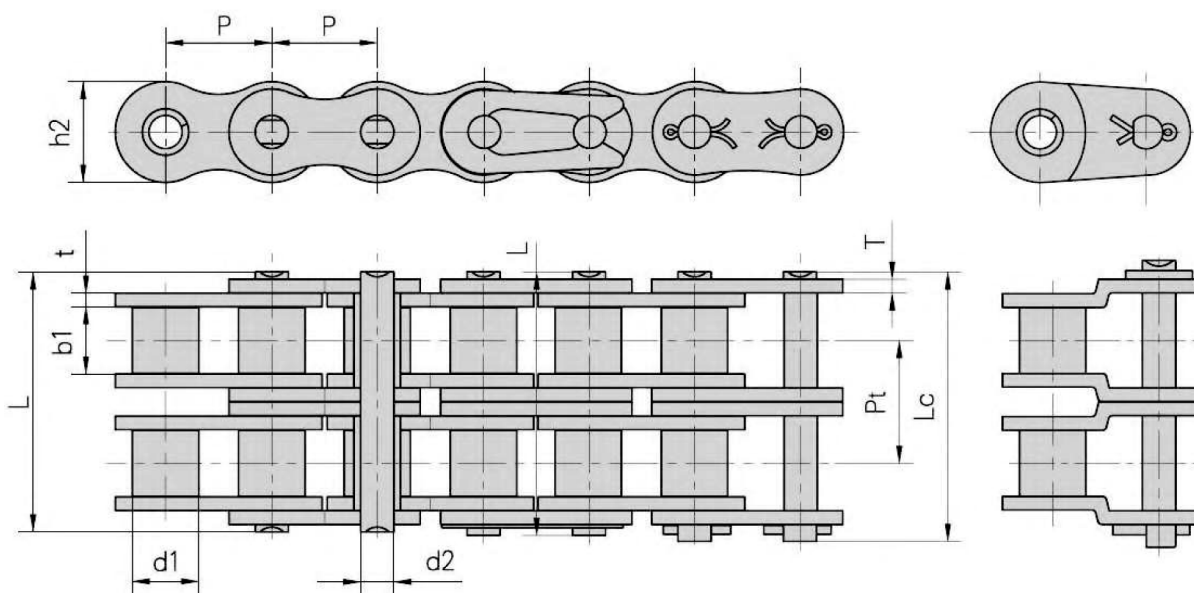


DIN ref. chain no.	ANSI ref. chain no.	Pitch	Roller diameter	Width between inner plate	Pin diameter	Pin length		Inner plate depth	Plate thickness	Ultimate tensile strength	Average tensile strength	Weight per meter
		P	d1 max	b1 min	d2 max	L max	Lc max	h2 max	t/T	Q min	Q0	q
		mm	mm	mm	mm	mm	mm	mm	mm	kN/LB	kN	kg/m
*3C	*15	4.7625	2.48	2.38	1.62	6.1	6.9	4.3	0.6	1.8/409	2	0.08
*4C-1	*20	6.35	3.3	3.18	2.91	7.9	8.4	6	0.8	3.5/795	4.6	0.15
*6C-1	*35	9.525	5.08	4.77	3.58	12.4	13.17	9	1.3	7.9/1795	10.8	0.33
085-1	41	12.7	7.77	6.25	3.58	13.75	15	9.91	1.3	6.67/1516	12.6	0.41
08A-1	40	12.7	7.95	7.85	3.96	16.6	17.8	12	1.6	14.1/3205	17.5	0.62
10A-1	50	15.875	10.16	9.4	5.08	20.7	22.2	15.09	2.03	22.2/5045	29.4	1.02
12A-1	60	19.05	11.91	12.57	5.94	25.9	27.7	18	2.42	331.8/7227	41.5	1.5
16A-1	80	25.4	15.88	15.75	17.92	32.7	35	24	3.25	556.7/12886	69.4	2.6
20A-1	100	31.75	19.05	18.9	9.53	40.4	44.7	630	4	353.8/80409	109.2	3.91
24A-1	120	38.1	22.23	25.22	11.1	50.3	54.3	35.7	4.8	1127/28864	156.3	5.62
28A-1	140	44.45	25.4	25.22	12.7	54.4	59	41	5.6	1172.4/39182	212	7.50
32A-1	160	50.8	28.58	31.55	14.27	64.8	69.6	47	6.4	226.8/51545	278.9	10.1
36A-1	180	57.15	35.71	35.48	17.46	72.8	78.6	53.6	7.2	2280.2/63682	341.8	13.45
40A-1	200	63.5	39.68	37.85	19.85	80.3	87.2	60	8	353.8/80409	431.6	16.15
48A-1	240	76.2	47.63	47.35	23.81	95.5	103	72.39	9.5	510.3/115977	622.5	23.2

*bushing chain: d1 in the table indicate the external diameter of the bushing

A Series Duplex American Standard Roller Chain

■ corresponding to ISO 606, DIN8188

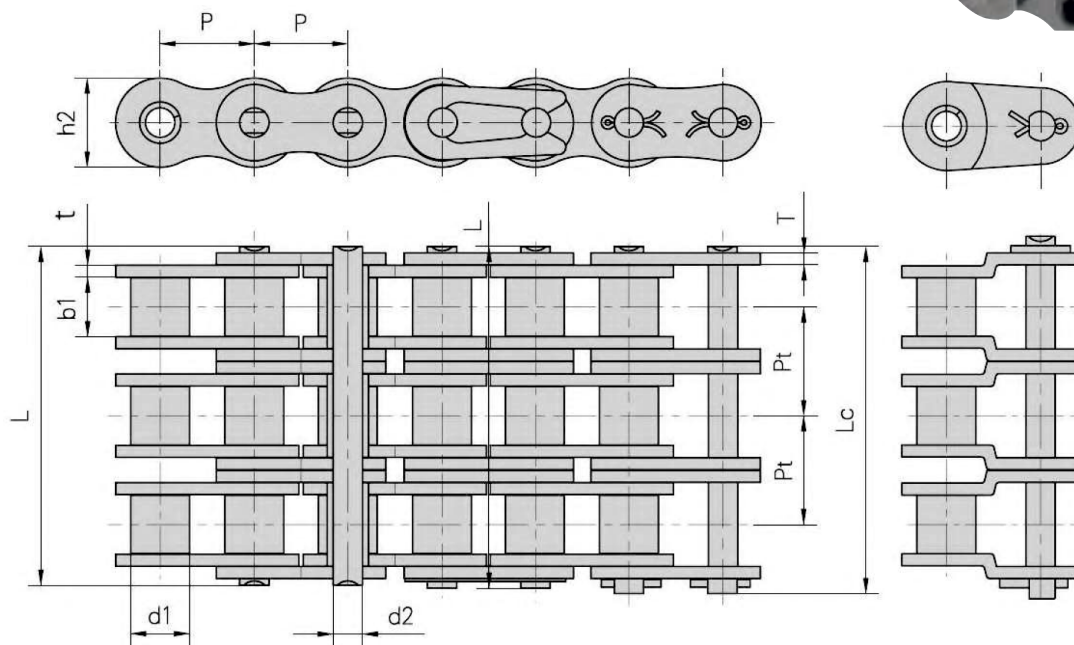


DIN ref. chain no.	ANSI ref. chain no.	Pitch	Roller diameter	Width between inner plate	Pin diameter	Pin length		Inner plate depth	Plate thickness	Transverse pitch	Ultimate tensile strength	Average tensile strength	Weight per meter
						L	Lc						
						max	max						
*04C-2	*25-2	6.35	3.3	3.18	2.31	14.5	15	6	0.8	6.4	7/1591	8.6	0.28
06C-2	*35-2	9.53	5.08	4.77	3.58	22.5	23.3	9	1.3	10.13	15.8/3591	19.7	0.63
085-2	41-2	12.7	7.77	6.25	3.58	25.7	26.9	9.91	1.3	11.95	13.34/3032	16.9	0.81
08A-2	40-2	12.7	7.95	6.25	3.96	31	32.2	12	1.5	14.38	28.2/6409	35.9	1.12
10A-2	50-2	15.875	10.16	9.4	5.08	38.9	40.4	15.09	2.03	18.11	44.4/10091	58.1	2
12A-2	60-2	19.05	11.91	12.57	5.94	48.8	50.5	18	2.42	22.78	63.6/14455	82.1	2.92
16A-2	80-2	25.4	15.88	15.75	7.92	62.7	64.3	24	3.25	29.29	113.4/25773	141.8	5.15
20A-2	100-2	31.75	19.05	18.9	9.53	76.4	80.5	30	4	35.76	177/40227	219.4	7.8
24A-2	120-2	38.1	22.23	25.22	11.1	95.8	99.7	35.7	4.8	45.44	254/57727	314.9	11.7
28A-2	140-2	44.45	25.4	25.22	12.7	103.3	107.9	41	5.6	48.87	344.8/78364	427.5	15.14
32A-2	160-2	50.8	28.58	31.55	14.27	123.3	128.1	47.8	6.4	58.88	453.6/103091	562.4	20.14
36A-2	180-2	57.15	35.71	35.48	17.46	138.6	144.4	53.6	7.2	65.84	560.5/127386	695	10.1
40A-2	200-2	63.5	39.65	37.85	17.46	151.9	158.8	60	8	71.55	707.6/160818	877.4	32.24
48A-2	240-2	76.2	47.63	47.35	23.81	183.4	190.8	72.39	9.5	87.83	1080.6/213955	1255.3	45.23

*bushing chain: d1 in the table indicate the external diameter of the bushing

A Series Triplex American Standard Roller Chain

■ corresponding to ISO 606, DIN8188



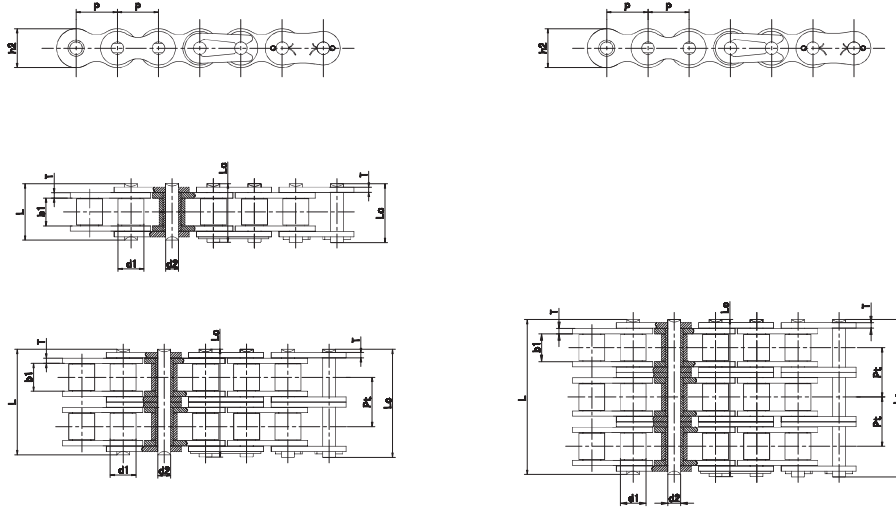
DIN ref. chain no.	ANSI ref. chain no.	Pitch	Roller diameter	Width between inner plate	Pin diameter	Pin length		Inner plate depth	Plate thickness	Transverse pitch	Ultimate tensile strength	Average tensile strength	Weight per meter
						L	Lc						
						max	max						
P	d1 max	b1 min	d2 max	L max	Lc max	h2 max	t/T	Pt	Q min	Q0	q		
mm	mm	mm	mm	mm	mm	mm	mm	mm	mm	mm	kN/LB	kN	kg/m
*04C-3	*25-3	6.35	3.3	3.18	2.31	21	21.5	6	0.8	6.4	10.5/2386	12.6	0.44
06C-3	*35-3	9.53	5.08	4.77	3.58	32.7	33.5	9	1.3	10.13	22.7/5386	28.6	1.05
08A-3	40-3	12.7	7.95	7.85	3.96	45.4	46.6	12	1.5	14.38	42.3/9614	50	109
10A-3	50-3	15.875	10.16	9.4	3.96	57	58.5	15.09	2.03	18.11	66.6/15136	77.8	3.09
12A-3	60-3	19.05	11.91	12.57	5.94	71.5	73.3	18	2.42	22.78	95.4/21682	111.1	4.54
16A-3	80-3	25.4	15.88	15.75	7.92	91.7	93.6	24	3.25	29.29	170.1/38659	198.4	7.89
20A-3	100-3	31.75	19.05	18.9	9.53	112.2	116.3	30	4	35.76	265.5/60341	309.6	11.77
24A-3	120-3	38.1	22.23	25.22	11.1	141.4	145.2	35.7	4.8	45.44	381/86591	437.2	17.53
28A-3	140-3	44.45	25.4	25.22	12.7	152.2	156.8	41	5.6	48.87	517.2/117545	593.3	22.2
32A-3	160-3	50.8	28.58	31.55	14.27	181.8	186.6	47	6.4	58.88	680.4/154636	780.6	30.02
36A-3	180-3	57.15	35.71	35.48	17.46	204.4	210.2	53.6	7.2	65.84	840.7/191068	983.6	38.22
40A-3	200-3	63.5	39.65	37.85	19.58	223.5	230.4	60	8	71.55	1061.4/241224	1217.8	49.03
48A-3	240-3	76.2	47.63	47.35	23.81	271.3	278.6	72.39	9.5	87.83	1530.9/347932	1756.5	71.6

*bushing chain: d1 in the table indicate the external diameter of the bushing

A Series Heavy duty roller chain

■ Simplex Roller Chain & Duplex Roller Chain & Troplex Roller Chain

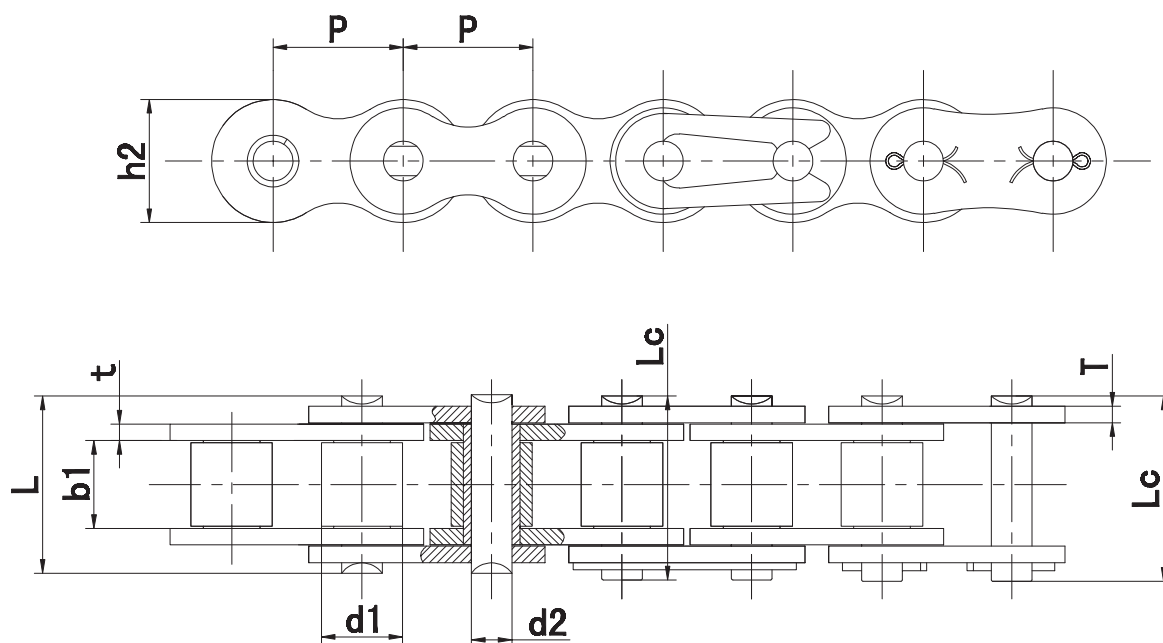
It is applicable to the occasion of shock and vibration load and the fatigue performance is better than the standard roller chain. Transition chains are not recommended for heavy stress situation.



DIN	ISO/ ANSI	Pitch	Roller diameter	Width between inner plate	Pin diameter	Pin length		Inner plate depth	Plate thick- ness	Trans- verse pitch	Ultimate tensile strength	Average tensile strength	Weight per meter
		P	d1 max	b1 min	d2 max	L max	L max	h2 max	t/T	Pt	Q min	Q0	q
		mm	mm	mm	mm	mm	mm	mm	mm	mm	mm	kN/LB	kN
08AH-1	40H	12.7	7.95	7.85	3.96	18.8	19.9	12	2	\	14.1/3205	19.1	0.82
10AH-1	50H	15.875	10.16	9.4	5.08	22.1	23.4	15.09	2.42	-	22.2/5045	30.2	1.25
12AH-1	60H	19.05	11.91	12.57	5.94	29.2	31	18	3.25	-	31.8/7227	42.7	1.87
16AH-1	80H	25.4	15.88	15.75	7.92	36.2	37.7	24	4	-	56.1/12886	71.4	3.1
20AH-1	100H	31.75	19.05	18.9	9.53	43.6	46.9	30	4.8	-	88.5/20114	112.4	4.52
24AH-1	120H	38.1	22.23	25.22	11.1	53.5	57.5	35.7	5.6	-	127.0/28864	160.9	6.6
28AH-1	140H	44.45	25.4	25.22	12.7	57.6	62.2	41	6.4	-	172.4/51545	217.3	8.3
32AH-1	160H	50.8	28.58	31.55	14.27	68.2	73.0	47.8	7.2	-	226.8/51545	285.8	10.3
40AH-1	200H	63.5	39.68	37.85	19.85	86.6	93.5	60.33	9.5	-	353.8/80409	444.5	19.16
12AH-2	60H-2	19.05	11.91	12.57	5.94	55.3	57.1	18	3.25	26.11	63.6/14455	84.5	3.71
16AH-2	80H-2	25.4	15.88	15.75	7.92	68.8	70.3	24	4	32.59	113.4/25773	145.3	6.15
20AH-2	100H-2	31.75	19.05	18.9	9.53	82.7	86	30	4.8	39.09	177.0/40227	225.9	9.03
24AH-2	120H-2	38.1	22.23	25.22	11.1	102.4	106.4	35.7	5.6	48.87	254.0/57727	322.7	13.13
28AH-2	140H-2	44.45	25.4	25.22									

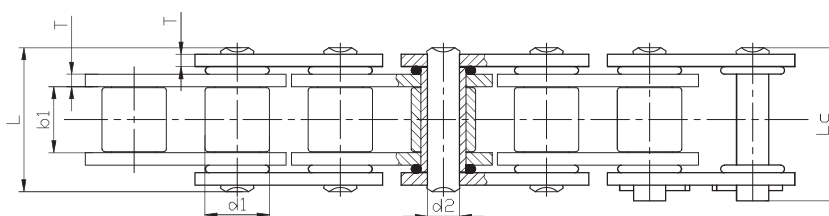
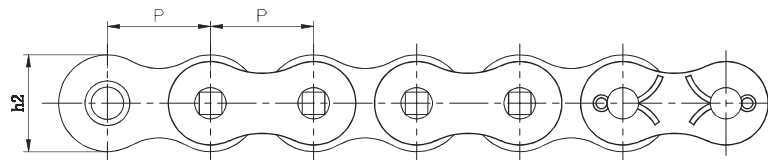
B Series
Heavy duty roller chain

■ Agricultural Driving Chain



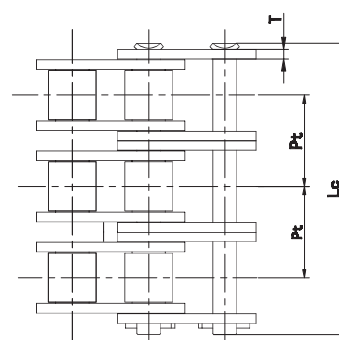
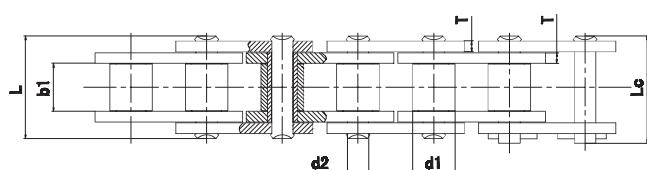
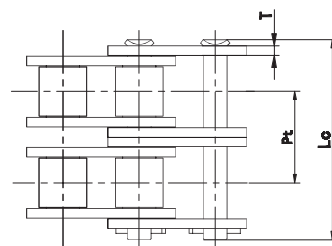
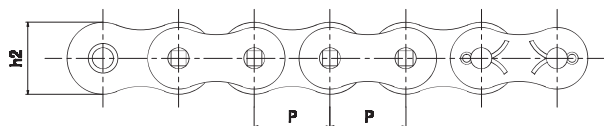
Chain №	Pitch	Roller diameter	Width between inner plate	Pin diameter	Pin length		Inner plate depth	Plate thickness	Ultimate tensile strength	Width per meter
	P	d1 max	b1 min	d2 max	L max	Lc max	h2 max	t/T max	Q min	Q0
	mm	mm	mm	mm	mm		mm	mm	kN/LB	kN
04BH	6	4	2.80	1.85	8.4	9.4	5	0.9	5.0/1136	0.14
*06BH1	9.525	6.35	5.72	3.58	14.4	15.4	8.2	1.6	11.25/2557	0.51
08BH	12.7	8.51	7.85	4.45	18.8	19.9	11.8	2.03	20.6/4682	0.79
10BH	15.875	10.16	9.65	5.08	20.2	21.6	14.7	1.85	25.0/5681	1.03
12BH	19.050	12.07	11.68	5.94	25.3	26.8	16	2.42	40.0/9091	1.45
16BH	25.4	15.88	17.02	8.90	35.7	38.9	24.1	4.0/3.1.6	80.0/18182	3.11
24BH	38.1	25.40	25.40	14.63	56.6	63.4	36.2	7.6/6	255.0/51136	9

O ring chain



Chain type	Pitch	Roller diameter	Width between inner plate	Pin diameter	Pin length		Inner plate depth	Plate thickness	Ultimate tensile strength	Average tensile strength	Width per meter
	P	d1 max	b1 min	d2 max	L max	Lc max	h2 max	t/T max	Q min	Q0	q
	mm	mm	mm	mm	mm	mm	mm	mm	kN/LB	kN	kg/m
40 OR	12.7	7.95	7.85	3.96	18.3	19.6	12	1.5	14.1/3205	19.9	0.67
50 OR	15.875	10.16	9.4	5.08	23.1	24.8	15.09	2	22.2/5045	29.3	1.19
60 OR	19.050	11.91	12.57	4.45	28.5	30.4	18	2.42	31.8/7227	42	1.62
80 OR	25.4	15.88	15.75	5.94	35.6	37.3	24	3.25	56.7/12886	72.3	2.7
100 OR	31.750	19.05	18.95	7.92	43.3	47.0	30	4	88.5/20114	110.5	3.94
120 OR	38.1	22.23	25.22	11.11	54	57.5	35.70	4.8	127.0/28864	157	6.34

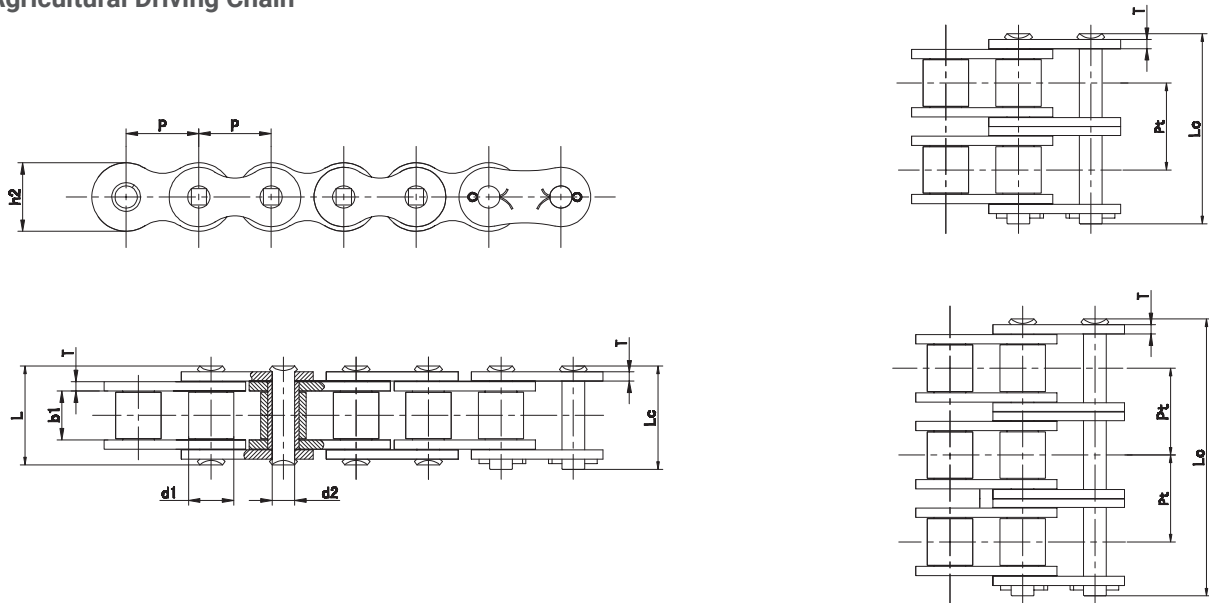
High strength roller chain Series HT Series



Chain type	Pitch	Roller diameter	Width between inner plate	Pin diameter	Pin length		Inner plate depth	Plate thickness	Transverse pitch	Ultimate tensile strength	Average tensile strength	Weight per meter
	P	d1 max	b1 min	d2 max	L max	L max	h2 max	t/T	Pt	Q min	Q0	q
	mm	mm	mm	mm	mm	mm	mm	mm	mm	kN/LB	kN	kg/m
80HT-1	25.4	15.88	15.88	7.94	36.6	39.2	24.1	4	/	81/318222	92	3.11
100HT-1	31.75	19.05	19.05	9.54	43.6	46.3	30.1	4.8	/	122/27445	140	4.58
120HT-1	38.1	22.23	25.4	11.11	53.9	57.5	36.2	5.6	/	165/37118	190	6.53
140HT-1	44.45	25.4	25.4	12.71	57.8	62	42.4	6.4	/	216/48591	248	8.27
160HT-1	50.8	28.58	31.75	14.29	67.9	72.4	48.2	7.2	/	276/62088	315	10.97
80HT-2	25.4	15.88	15.88	7.94	69.2	71.8	24.1	4	32.6	162/36443	178	6.18
100HT-2	31.75	19.05	19.05	9.54	82.8	85.5	30.1	4.8	39.1	244/54890	275	9.03
120HT-2	38.1	22.23	25.4	11.11	102.8	106.4	36.2	5.6	48.9	330/74236	374	12.9
140HT-2	44.45	25.4	25.4	12.71	110	114.5	42.4	6.4	52.2	432/97182	490	16.38
160HT-2	50.8	28.58	31.75	14.29	129.8	134.5	48.2	7.2	61.9	552/124177	620	21.78
80HT-3	25.4	15.88	15.88	7.94	101.9	104.5	24.1	4	32.6	244/54890	261	9.24
100HT-3	31.75	19.05	19.05	9.94	122	124.6	30.1	4.8	39.1	366/82335	407	13.54
120HT-3	38.1	22.23	25.4	11.11	151.8	155.3	36.2	5.6	48.9	495/111354	552	19.33
140HT-3	44.45	25.4	25.4	12.71	162.3	166.4	42.4	6.4	52.2	648/145773	437.7	24.54
160HT-3	50.8	28.58	31.75	14.29	191.9	196.4	48.2	7.2	61.9	828/186265	920	32.63

SP Series High strength roller chains

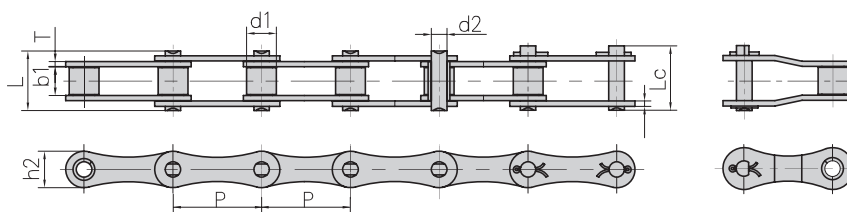
■ Agricultural Driving Chain



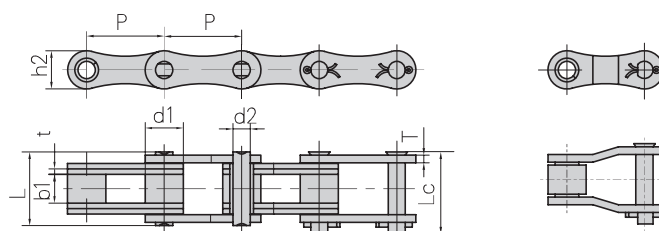
Chain №	Pitch	Roller diameter	Width between inner plate	Pin diameter	Pin length		Inner plate depth	Plate thickness	Ultimate tensile strength	Average tensile strength	Weight per meter
	P	d1 max	b1 min	d2 max	L max	Lc max	h2 max	T	Q min	Q0	q
	mm	mm	mm	mm	mm	mm	mm	mm	kN/LB	kN	kg/m
80HSP-1	25.4	15.88	15.75	7.94	36.6	38.9	24.1	4	89.2/20066	98.1	3.36
100HSP-1	31.75	19.05	18.95	9.54	43.6	46.9	30.1	4.8	131.8/29649	145	4.9
120HSP-1	38.1	22.23	25.22	11.11	53.9	57.5	36.2	5.6	176.0/39592	196	7.12
140HSP-1	44.45	25.4	25.22	12.71	57.8	62.2	42.4	6.4	231.1/52149	255	8.88
160HSP-1	50.8	28.58	31.55	14.29	68.2	73	48.2	7.2	294.5/66260	324	11.72
80HSP-2	25.4	15.88	15.75	7.94	68.8	72	24.1	4	178.4/40132	196.2	6.65
100HSP-2	31.75	19.05	18.95	9.54	82.7	86	30.1	4.8	263.6/59299	290	9.71
120HSP-2	38.1	22.23	25.40	11.11	102.4	106.4	36.2	5.6	356.4/780175	392	14.12
140HSP-2	44.45	25.4	25.22	12.71	109.8	114.4	42.4	6.4	463.6/104300	510	17.38
160HSP-2	50.8	28.58	31.55	14.29	130.1	134.9	48.2	7.2	588/132275	647	23
80HSP-3	25.4	15.88	15.75	7.94	101.4	104.6	24.1	4	267.6/60200	294.3	9.95
100HSP-3	31.75	19.05	18.95	9.94	121.8	125.1	30.1	4.8	395.4/88948	435	14.53
120HSP-3	38.1	22.23	25.22	11.11	151.2	155.2	36.2	5.6	534.5/120250	588	21.12
140HSP-3	44.45	25.4	25.22	12.71	162	166.6	42.4	6.4	695.5/156448	465	25.88
160HSP-3	50.8	28.58	31.55	14.29	192	196.8	48.2	7.2	882.7/198576	971	34.22

S Series High strength roller chains

■ Agricultural Roller chains S type, acc. to DIN 8189



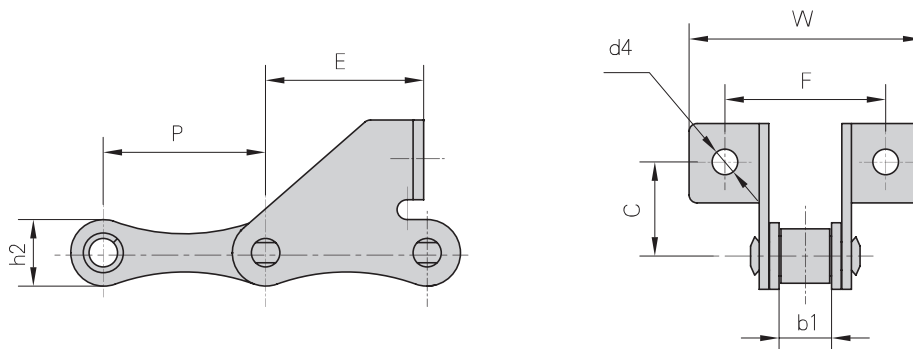
DIN	Pitch	Roller diameter	Width between inner plate	Pin diameter	Pin length		Inner plate depth	Plate thickness	Ultimate tensile strength	Average tensile strength	Weight per meter
	P	d1 max	b1 min	d2 max	L max	Lc max	h2 max	T	Q min	Q0	q
	mm	mm	mm	mm	mm	mm	mm	mm	kN/LB	kN	kg/m
S32	29.21	11.43	15.88	4.45	26.7	28.8	13.2	1.8	8/1818	21.6	0.86
S32V	29.21	11.43	15.88	5.08	27.3	29.7	13.5	2.1	25/5680	27	0.96
S42	34.93	14.27	19.05	7	34.3	37	19.8	2.8	27/6136	50.8	1.6
S45	41.4	15.24	22.23	5.72	37.7	40.4	17.3	2.8	18/4091	36.1	1.66
S51	38.1	15.24	16	5.72	30.9	33.8	17.3	2.8	28/6364	30.8	1.48
S52L	38.1	15.24	16.4	5.72	30.9	33.8	16.5	2.5	29.2/6636	32.2	1.36
S52	38.1	15.24	22.23	5.72	37.7	40.4	17.3	2.8	18/4091	36.1	1.68
55V	41.4	17.9	22.23	8.22	39.3	42.4	20	3	42/9546	45	2.22
S55	41.4	17.78	22.23	5.72	37.7	40.4	17.3	2.8	18/4091	36.1	1.8
S55R	19.05	17.78	22.23	8.9	41	44	22.4	3.5	45/10227	73.1	2.49
S55RH	41.4	17.78	22.23	8.9	43.2	46.4	22.4	4	65/14772	84.5	2.74
S62	41.91	19.05	26.2	5.72	40.3	43	17.3	2.5	26.7/6067	36.1	1.87
S62F5	41.91	19.05	26.2	5.72	40.3	43	16.7	2.5	26.7/6067	36.1	2.07
S77	58.34	18.26	22.23	8.9	43.2	46.4	26.2	4	344.8/78364	37.1	2.66
S88	66.27	22.86	28.58	8.9	49.8	53	26.2	4	453.6/103091	37.1	2.25
CA642	41.4	15.88	19	8.28	36.1	39.1	21.2	3	707.6/160818	55	1.98
CA650	50.8	25	18.9	9.53	40.4	44.7	25	4	95.4/21682	95.5	3.49
CA650F2	50.8	20	18.9	7.92	40.4	44.7	25	4	170.1/38659	95.5	2.98



DIN	Pitch	Roller diameter	Width between inner plate	Pin diameter	Pin length		Inner plate depth	Plate thickness	Ultimate tensile strength	Average tensile strength	Weight per meter
	P	d1 max	b1 min	d2 max	L max	Lc max	h2 max	t/T	Q min	Q0	q
	mm	mm	mm	mm	mm	mm	mm	kN/LB	kN/LB	kN/LB	kg/m
CA650F51	0.82	5.01	9.01	1.28	49.2	53.7	25	3.5/5.01	138.0/2727	140.04	4.36

S Series High strength roller chains

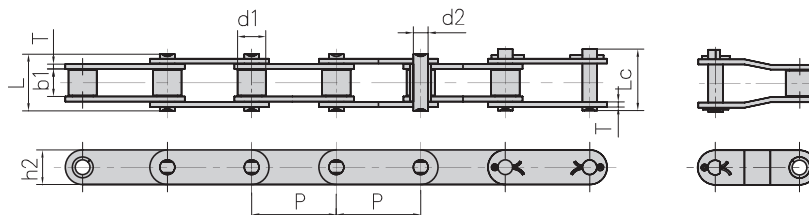
■ Agricultural Roller chains S type



Chain Nº	P	b1	C	E	F	W	d4	h2
	mm	mm	mm	mm	mm	kN	kg/m	mm
S32SD	29.21	15.88	20	19.2	58	78	6.4	13.2
S45W-F1	41.4	22.23	20	37	58	87	6.6	17.3
S45W-F4	41.4	22.23	20.5	33.2	58	85.6	6.6	17.3
S45F1	41.4	22.23	21	25	62.4	83.4	8.5	17.3
S52SD	38.1	22.23	20	19.2	58	88.5	6.4	17.3
S52F4	38.1	15.8	20.6	37	53.8	69.5	6.4	16.7
S52F8	38.1	22.23	20.6	37	60.7	76.4	6.4	17.3
S52F9	38.1	18.5	20	18.5	54.5	71	6.5	16.5
S52LSD	38.1	16.4	20	17.5	54.5	71	6.5	16.5
S55FS	41.4	22.23	20	37	58	87	6.4	17.3
S55F3	41.4	22.23	20.5	33.2	58	85.6	2.74	17.3
S55F4	41.4	22.23	20	37	58	87	6.6	17.3
S55F6	41.4	22.23	20	30	58	87	6.4	17.3
S55F7	41.4	22.23	20.5	33.2	58	85.6	6.6	17.3
S62SD	41.91	26.2	20	32.6	61.4	92	6.4	17.3

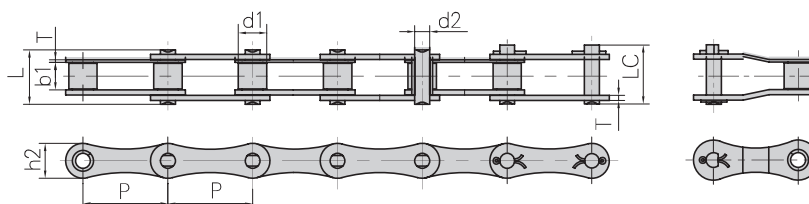
A and CA Series High strength roller chains

■ Agricultural Roller chains

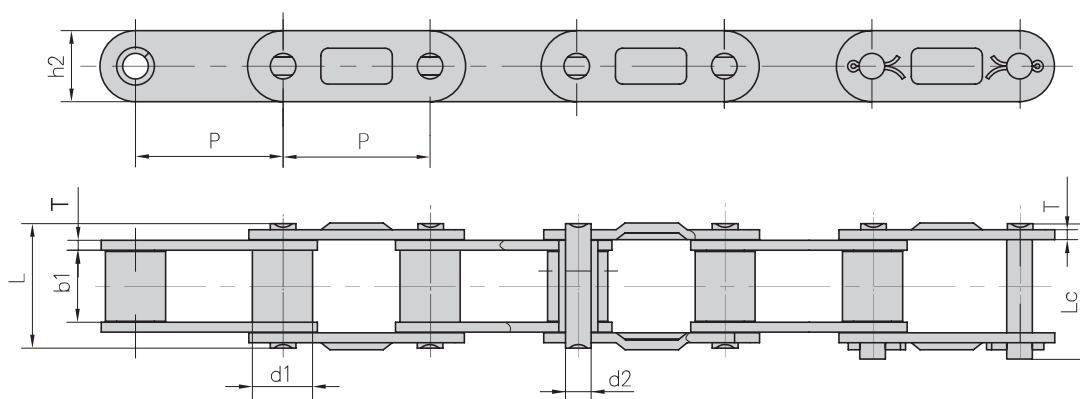


Chain №	Pitch	Roller diameter	Width between inner plate	Pin diameter	Pin length		Inner plate depth	Plate thickness	Ultimate tensile strength	Average tensile strength	Weight per meter
	P	d1 max	b1 min	d2 max	L max	Lc max	h2 max	T	Q min	Q0	q
	mm	mm	mm	mm	mm	mm	mm	mm	KN/LB	kN	kg/m
CA550	41.4	16.87	19.81	7.19	35	38	19.3	2.8	39.1/8886	51.2	1.94
CA550V	41.4	16.8	19.05	8.28	36.1	39.1	22	3	55/12499	68.7	2.24
CA555	41.4	16.87	12.70	7.19	29.1	32	19.3	3.1	39.1/8886	56	1.72
CA557	41.4	17.78	20.24	8	37.4	40.6	23.1	3.1	55.61/12639	74.3	2.60
CA620	42.01	17.91	24.51	7.19	41.8	45.2	20.2	3.25	39.1/8886	55.1	2.35
CA650	50.80	19.05	19.05	9.53	40.5	46.8	25.5	4	9/20454	95.5	3.49
CA2060H	38.1	11.91	12.70	5.94	29.2	31.6	18	3.25	31.1/6996	40.5	1.45
CA2063H	38.1	11.89	12.70	5.94	29.4	34.2	19.3	3.25	31.28/7109	40.5	1.65
CA550F4	41.4	14.35	20.24	7.14	35	38.5	19.05	2.8	50/11363	52	1.76
CA550F5	41.4	16.66	20.24	7.14	35	38.5	19.05	2.8	45/10227	52	1.97
CAE44151	28.57	15.88	16.20	7.92	33.5	36.9	22.2	3.25	58.8/13363	64.5	2.73
38.4R	38.4	15.88	19.05	6.92	33.8	36.4	17.3	2.5	33/7480	41.2	1.70
38.4V	38.4	15.88	18	6.92	35	38	17.3	3	40/9091	50	1.83
38.4RVB	38.4	15.88	19.05	8.28	36.1	39.4	20.5	3	50/711363	62.5	2.17
55VD	41.4	17.9	23	8.22	39.3	42.4	20	2.8	42/9546	45	2.34
C62F3	41.91	19.05	25.4	8	42	44.6	26	3	47/10796	58.7	3.12

A and CA Series High strength roller chains



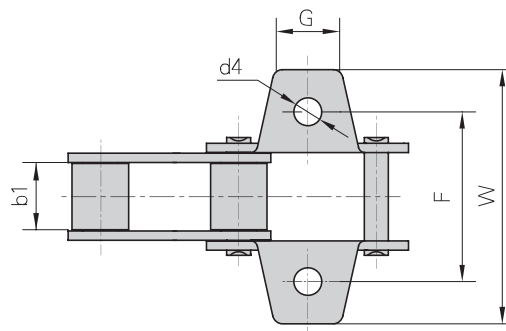
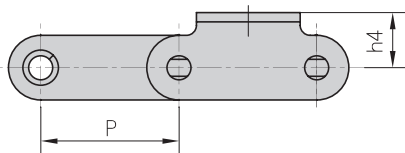
Chain Nº	Pitch	Roller diameter	Width between inner plate	Pin diameter	Pin length		Inner plate depth	Plate thickness	Ultimate tensile strength	Average tensile strength	Weight per meter
	P	d1 max	b1 min	d2 max	L max	Lc max	h2 max	T	Q min	Q0	q
	mm	mm	mm	mm	mm	mm	mm	mm	kN/LB	kN	kg/m
A550	41.4	16.87	19.81	7.19	35	38	19.3	2.8	39.1/8886	51.2	1.79
A555	41.4	16.87	12.70	7.19	29.1	32	19.3	3.1	39.1/8886	56	1.6
A557	41.4	17.78	20.24	8	37.4	40.6	23.1	3.1	55.61/12639	74.3	2.45
A260	42.01	17.91	24.51	7.19	41.8	45.2	20.2	3.25	39.1/8886	55.1	2.18
S55H	41.4	17.78	22.23	9.1	40	44.5	23.1	3	50	58	2.65



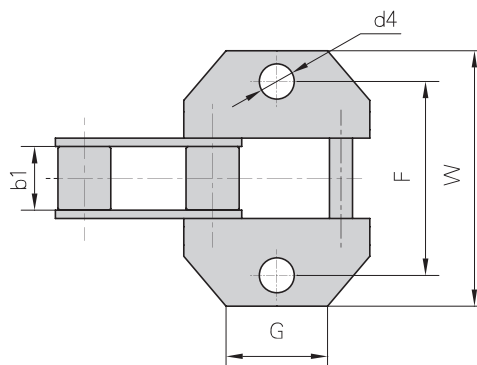
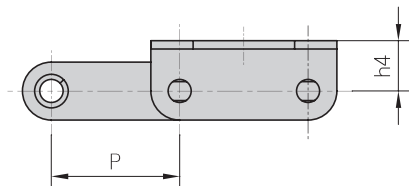
Chain Nº	Pitch	Roller diameter	Width between inner plate	Pin diameter	Pin length		Inner plate depth	Plate thickness	Ultimate tensile strength	Average tensile strength	Weight per meter
	P	d1 max	b1 min	d2 max	L max	Lc max	h2 max	T	Q min	Q0	q
	mm	mm	mm	mm	mm	mm	mm	mm	kN/LB	kN	kg/m
CA550D	41.4	16.87	19.81	7.19	35	38	19.3	2.8	39.1/8886	51.2	1.94
CA555D	41.4	16.87	12.70	7.19	29.1	32	19.3	3.1	39.1/8886	56	1.72
CA557D	41.4	17.78	20.24	8	37.4	40.6	23.1	3.1	55.61/12639	74.3	2.6
CA260D		17.91	24.51	7.19	41.8	45.2	20.2	3.3	39.1/8886	55.1	2.35
CA627	30	15.88	19.05	8.28	36	39.2	20.65	3	48	48	2.45

K Series High strength roller chains

■ Agricultural Roller chains



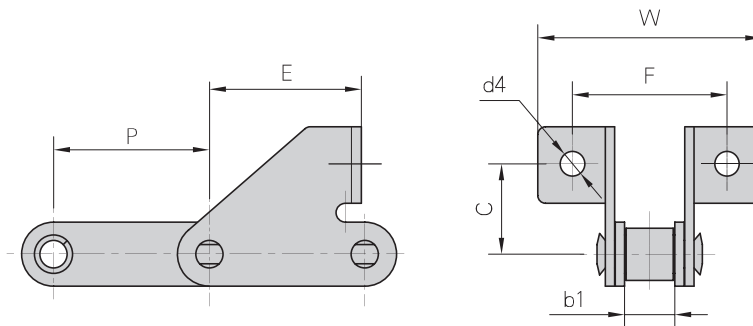
Chain N°	P	b1	G	F	W	h4	d4
	mm	mm	mm	mm	mm	kN	kg/m
38.4VK1	38.4	18	22	57.5	82	15.4	9
38.4RF1	38.4	18.5	23	57.5	80	16	8.7
CA550F2	41.4	19.5	22	50.8	72	14.7	8.5
CA550K1F1	41.4	19.81	20	54	76.4	16.5	8.3
CA550K1 F2	41.4	19.81	20	50.8	76.2	16.5	8.3
CA550K25	41.4	19.81	22.23	50.8	71.4	12.7	8.7
CA557K1	41.4	20.24	22	50.8	72	15.9	8.7
CA550VK1	41.4	19.05	27	54	75.54	16.5	8.5
CA550VK1F1	41.4	19.05	27	50.8	75.54	16.5	8.5
CA550F4K19	41.4	20.24	22.23	50.8	77.8	12.7	6.75



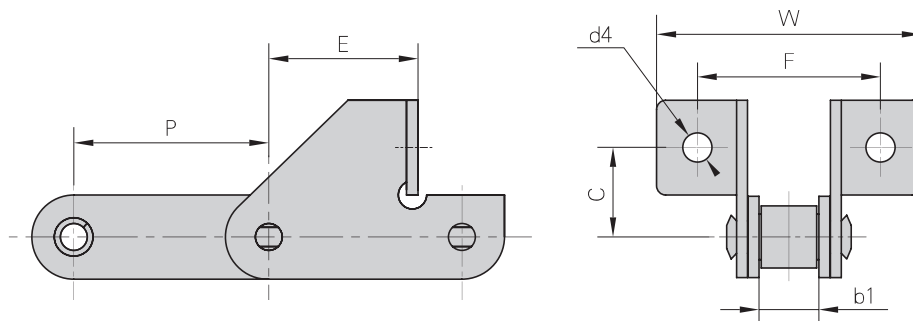
Chain N°	P	b1	G	F	W	h4	d4
	mm	mm	mm	mm	mm	kN	kg/m
38.4RK1	38.4	19.05	29.1	58	76.5	15.1	10.5
38.4VK1 F1	38.4	18	29.1	57	75	15.1	8.5
38.4V F 7	38.4	19.05	39	58.4	82.4	14.5	10.5
38.4VBK1	38.4	19.05	29	58	87	14	10.5
38.4VBF3	38.4	19.05	40	57	86	16	10.3
CA550VK18	41.4	19.05	22.6	54	71.6	12.7	8.5

SD Series High strength roller chains

■ Agricultural Roller chains



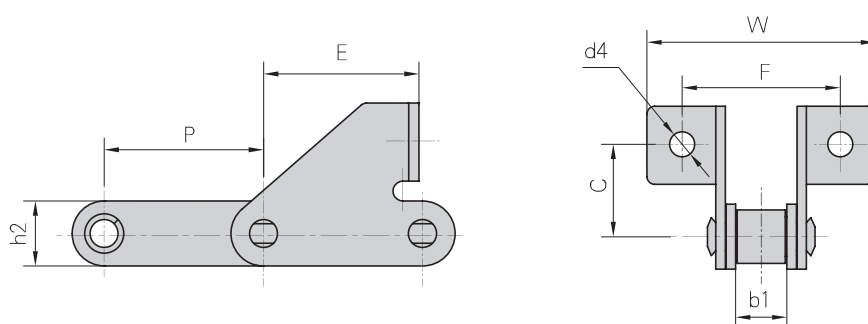
Chain Nº	P	b1	E	F	W	C	d4
	mm	mm	mm	mm	mm	mm	mm
38.4RSD	38.4	19,05	38.4	52	71	24.5	8.4
38.4RSDF1	38.4	19,05	38.4	52	70	24.5	8.4
38.4VSD	38.4	18	38.4	52	71	24	8.4
38.4BSD	38.4	19,05	38.4	54	71	25	8.4
38.4VBSDF1	38.4	19,05	38.4	52	73	24	8.3
CA550SD	41.4	19.81	36.9	47.6	68.2	31	8.7
CA550SDF4	41.4	19.81	36.9	47.6	89	31	8.7



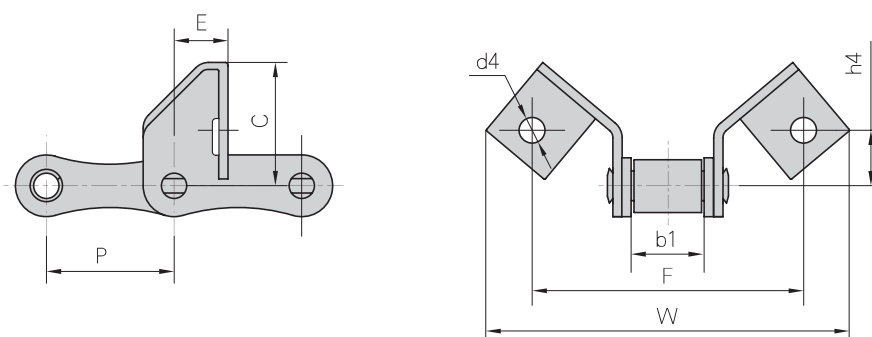
Chain Nº	P	b1	E	F	W	C	d4
	mm	mm	mm	mm	mm	mm	mm
CA550SDF1	41.4	19,81	35	58	85	20.5	8.5
CA550SDF2	41.4	19,81	32.5	62	84	20	8.6
CA550SDF3	41.4	19,81	35	58	85	20.5	8.5
CA550SDF6	41.4	19,81	33	58	85	20.5	8.5
CA550SDF7	41.4	19,81	32.5	62	89	20	8.6
CA550F5SD	41.4	20.24	33	57.8	83.5	20	6.7
CA550SDF8	41.4	19.81	33	58	85.9	20.5	6.5

S Series
High strength roller chains

Agricultural Roller chains



Chain Nº	P	d1	b1	C	E	F	W	d4	h2
	mm	mm	mm	mm	mm	mm	mm	mm	mm
S52F3	38.4	15.88	18.5	24	37.4	52	73	8.7	17.5



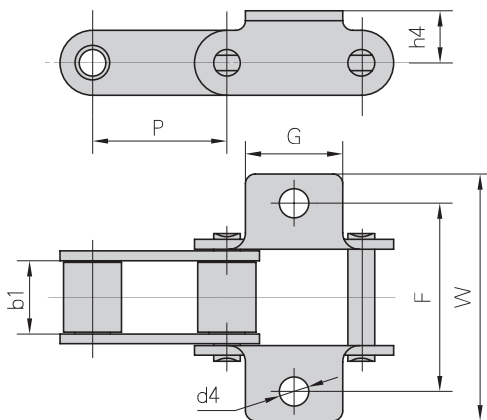
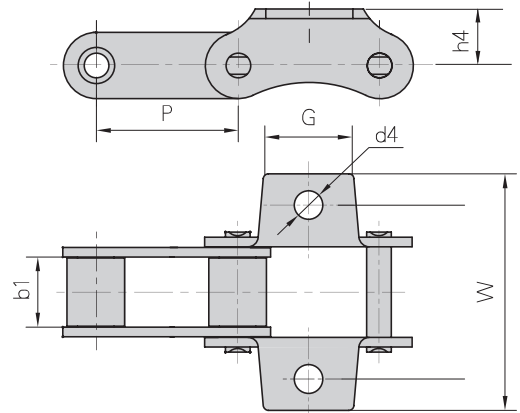
Chain Nº	P	b1	C	E	F	W	b4	d4
	mm	mm	mm	mm	mm	mm	mm	mm
55VSE	41.4	22.23	41	17.5	88	118	18.44	8.4
55VSEL	41.4	22.23	41	31.3	88	118	18.44	8.4

C Series

High strength roller chains

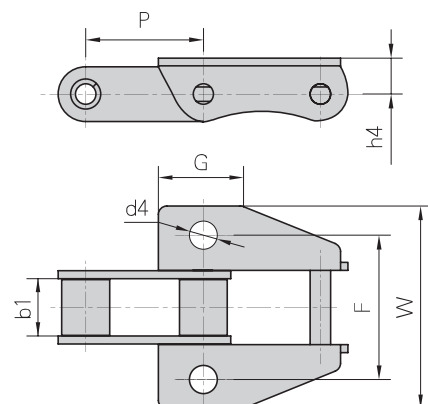
■ Agricultural Roller chains

Chain Nº	P	b1	C	E	F	W	b4
	mm	mm	mm	mm	mm	mm	mm
CA550F1	41.4	19.81	22.23	53.95	70.6	12.7	9.9
CA550K19F3	41.4	19.81	25.5	50.8	68.4	16.5	8.33



Chain Nº	P	b1	C	E	F	W	b4
	mm	mm	mm	mm	mm	mm	mm
55VVK1	41.4	23	30	50.8	76	16	9

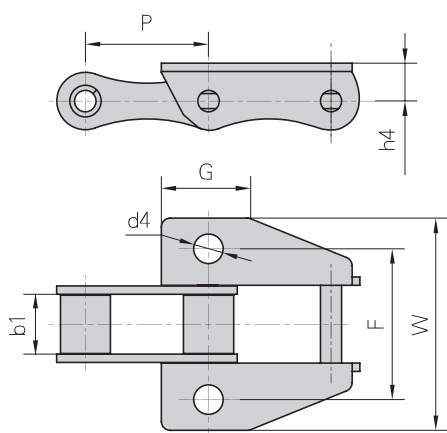
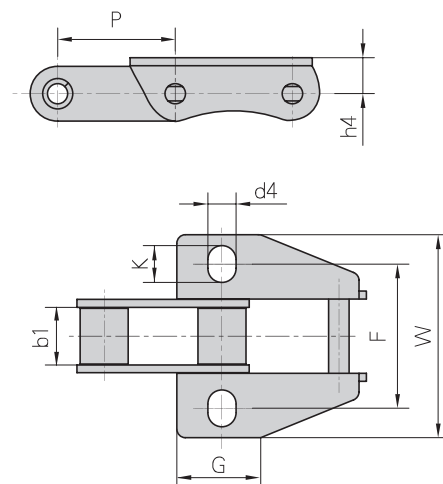
Chain Nº	P	b1	C	E	F	W	b4
	mm	mm	mm	mm	mm	mm	mm
CA550K39M	41.4	19.81	29.5	50.8	71.4	12.7	9.8
CA557K39M	41.4	20.24	29.5	50.8	71.4	12.7	9.8
CA557K39MF1	41.4	20.24	22	57.15	77.59	13.97	9.9



C Series
High strength roller chains

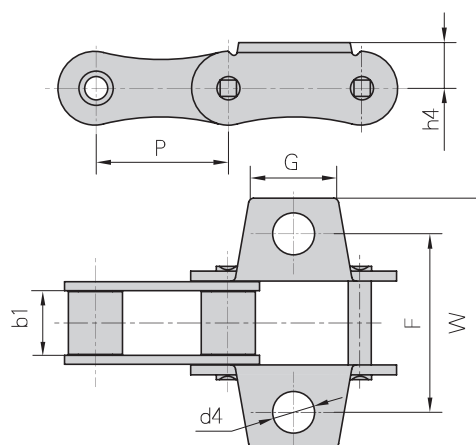
■ **Agricultural Roller chains**

Chain Nº	P	b1	G	F	W	h4	d4	K
	mm	mm	mm	mm	mm	mm	mm	mm
CA550K39MF2	41.4	19.81	29.5	50.8	71.4	12.7	9.9	13
CA557K39MF2	41.4	20.24	29.5	50.8	71.4	12.7	8.33	13



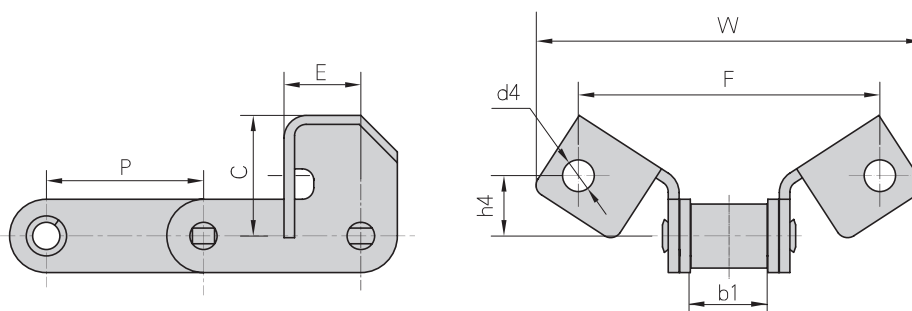
Chain Nº	P	b1	G	F	W	h4	d4
	mm	mm	mm	mm	mm	mm	mm
A557K39M	41.4	20.24	29.5	56.7	77.8	13.5	10.1

Chain Nº	P	b1	G	F	W	h4	d4
	mm	mm	mm	mm	mm	mm	mm
A557K27S	41.4	20.24	28.6	57.15	79.35	14.3	13.1

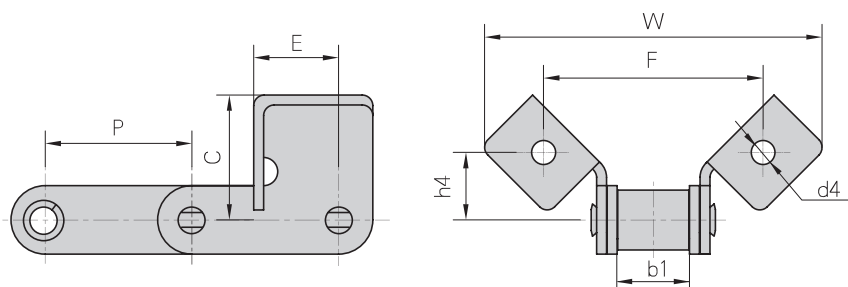


C Series
High strength roller chains

■ Agricultural Roller chains



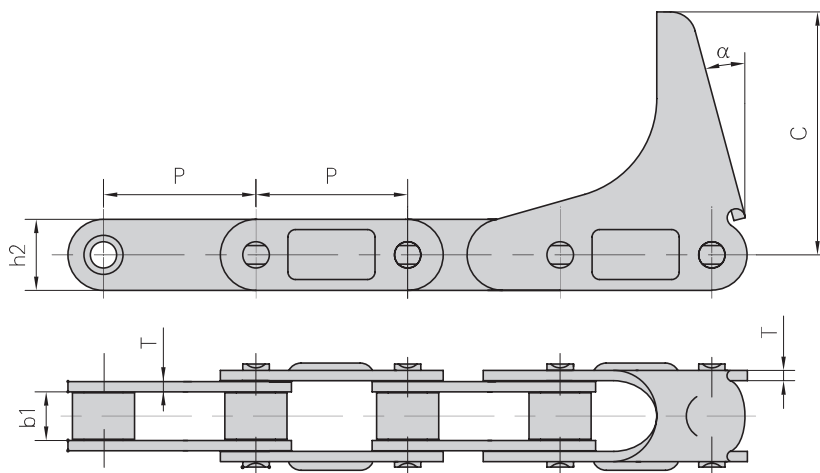
Chain Nº	P	b1	E	C	F	W	h4	d4
	mm	mm	mm	mm	mm	mm	mm	mm
CA550F14	41.4	19.8	20.24	31.75	79.4	101.6	15.9	8.33
CA550F16	41.4	20	22.3	39	78	109.2	17.7	8



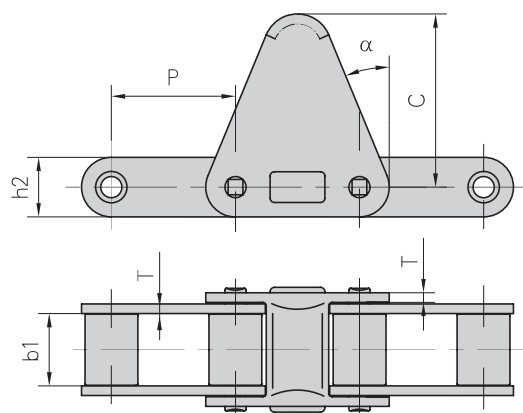
Chain Nº	P	b1	E	C	F	W	h4	d4
	mm	mm	mm	mm	mm	mm	mm	mm
CA550F15	41.4	19.81	24	35.26	61.98	95.25	19.05	6.73
CA550F17	41.4	19.81	23.68	40.89	114.3	143.7	20.57	9.91
CA550F13	41.4	19.05	25.4	59.6	79.35	135.45	28.6	8.74

Maize chain
High strength roller chains

■ Agricultural Roller chains



Chain Nº	P	b1	h2	T	C	α
	mm	mm	mm	mm	mm	°
CA555-C6E	41.4	12.7	19.3	3.1	63.5	15
CA555-C6EJ	41.4	12.7	19.3	3.25	66	15

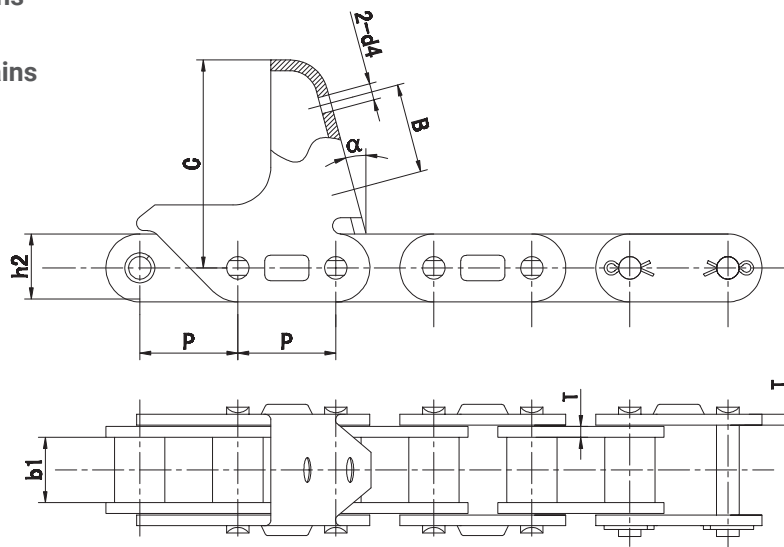


Chain Nº	P	b1	h2	T	C	α
	mm	mm	mm	mm	mm	°
CA620-C30E	41.4	24.51	20.2	3.25	58.7	22.5

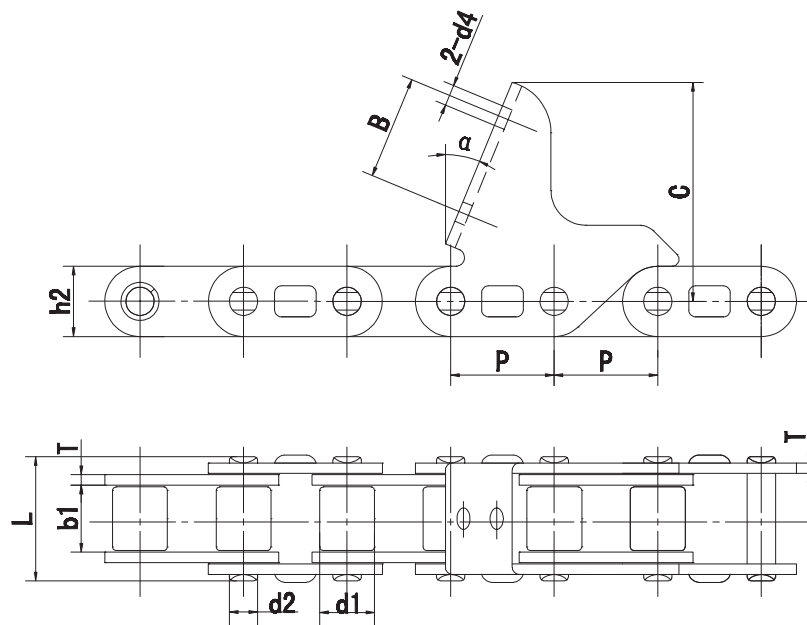
Maize chain

High strength roller chains

■ Agricultural Roller chains



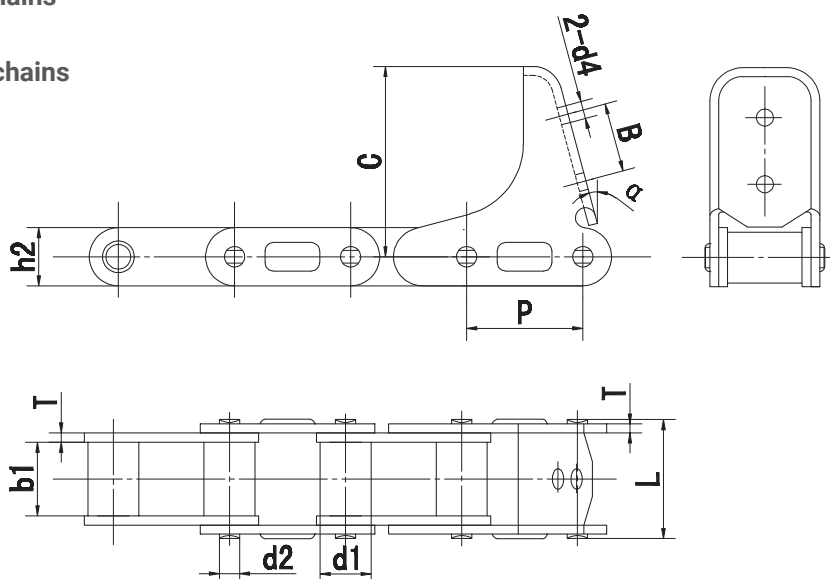
Chain Nº	P	b1	h2	B	d4	T	C	α
	mm	mm	mm	mm	mm	mm	mm	°
CA627-M40A	30	19.05	20.5	56.1	6.5	3	63	15
CA627-CPEF7	30	19.05	20.5	35.5	6.5	3	63	15
CA627-CPEF12	30	19.05	20.5	30	6.5	3	63	15
CA627-CPEF13	30	19.05	20.5	25.5	6.5	3	63	15



Chain Nº	Pitch	Roller diameter	Width between inner plate	Pin diameter	Pin length	Plate dimension						Ultimate tensile strength
	P	d1 max	b1 min	d2 max	L max	h2	T	C	α	B	d4	Q min
	mm	mm	mm	mm	mm	mm	mm	mm	°	mm	mm	KN/LB
CA627-CPEF11	30	15.88	19.05	8.28	36.1	20.5	3	63	22.5	30	6.5	50/11248

Maize chain High strength roller chains

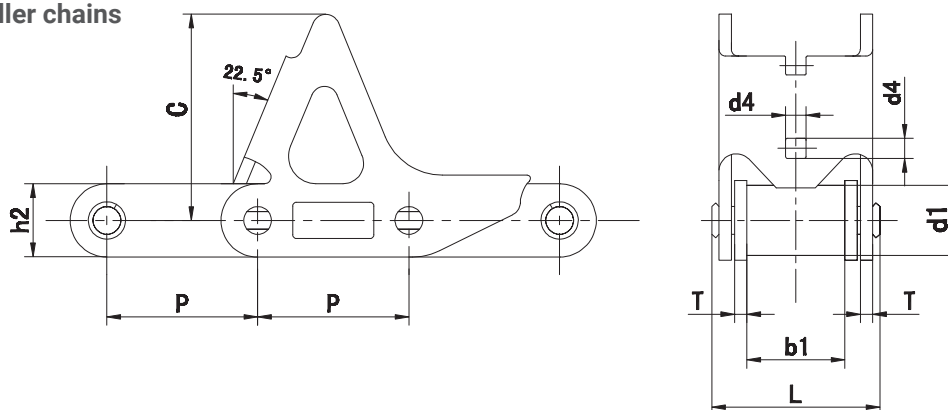
■ Agricultural Roller chains



Chain Nº	Pitch	Roller diameter	Width between inner plate	Pin diameter	Pin length	Plate dimension						Ultimate tensile strength
	P	d1 max	b1 min	d2 max	L max	h2	T	C	α	B	d4	Q min
	mm	mm	mm	mm	mm	mm	mm	mm	°	mm	mm	KN/LB
CA620MC11E	40.4	17.67	24.51	7.16	41.5	20.2	3.1	66	15	24	6	39.1/8866
CA620C11E	40.4	17.67	24.51	7.16	41.5	20.2	3.1	66	15	24	6	39.1/8866

Maize chain High strength roller chains

■ Agricultural Roller chains



Chain Nº	Pitch	Roller diameter	Width between inner plate	Pin length	Plate dimension				Ultimate tensile strength	Weight per meter
	P	d1 max	b1 min	L max	h2	T	C	d4	Q min	q
	mm	mm	mm	mm	mm	mm	mm	mm	KN/LB	kg/m
55VDF1-CPEF	41.4	17.9	22.5	39.7	23	3	58	8.1	50/11248	2.68

HELVIC

High quality chains

TOV "TD IRBIS" IS AN AUTHORIZED DISTRIBUTOR
OF HELVIC PRODUCTS IN UKRAINE.



"SHOP "BEARING":

Kashtanova St. 35A

+38 (050) 400-45-72

+38 (066) 510-56-15

+38 (050) 346-68-87

+38 (057) 703-12-71

tel.: +38 (050) 4-999-555,
+38 (057) 714-09-09

WWW.IRBIS.UA

Ukraine, 61001, Kharkiv,
Mykytynskiy lane, 24.

Looking forward to your feedback
and suggestions at: irbis@irbis.ua

AFFILIATES:

Kyiv,
Novopyrohivska Str., 66, 3 floor,
tel.: +38 (050) 400-41-33,
+38 (050) 400-38-53.

Dnipro,
B. Khmel'nitskoho Str., 4,
4 floor, of. 406, 408-410
tel.: +38 (050) 400-41-22.

Odesa,
Chernomorskoho kozatstva Str., 115,
8 floor, of. 810,
tel.: +38 (050) 301-95-03,
+38 (050) 401-40-18,
+38 (050) 398-66-40.

Zaporizhia,
Mykoly Krasnova Str., 6,
tel.: +38 (050) 364-21-16.

Kremenchuk,
Ivana Prikhodko Str., 28/1,
tel.: +38 (050) 402-76-70.

Sumy,
Peremoha Ave., 107,
tel.: +38 (050) 404-84-80,
+38 (050) 400-36-58.

Vinnitsia,
Lebedynskoho Str., 11, of.3,
tel.: +38 (050) 472-64-16.

Mykolaiv,
Radisna Str., 10/1,
tel.: +38 (095) 640-00-53.

Ternopil,
Mykulynetska Str., 46,
tel.: +38 (050) 436-75-40.

Rivne,
Knyazia Volodymyra Str., 109D,
tel.: +38 (050) 309-78-18.

Uman,
Derevianka Str., 4,
tel.: +38 (050) 308-70-37,
+38 (050) 384-37-85.

Kropyvnytskyi,
Inzheneriv Ave., 11A,
tel.: +38 (050) 109-76-40

